

# MEMORY

## Unbuffered

# 2 M × 64 BIT

# HYPER PAGE MODE DRAM DIMM

## MB8502E064AC-60/-70

Unbuffered, 2 M × 64 Bit Hyper Page Mode DIMM, 3.3 V, 1-bank, 2 KR

### DESCRIPTION

The Fujitsu MB8502E064AC is a fully decoded, CMOS Dynamic Random Access Memory (DRAM) module consisting of eight MB81V17805A devices. The MB8502E064AC is optimized for those applications requiring small size package, low power consumption, enhanced performance. The operation and electrical characteristics of the MB8502E064AC are the same as the MB81V17805A which features hyper page mode (EDO) operation. For ease of memory expansion, the MB8502E064AC is offered in an 168-pin Dual In-line Memory Module package (DIMM).

### PRODUCT LINE & FEATURES

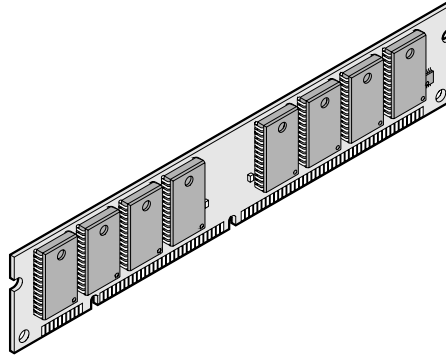
| Parameter                  |                | MB8502E064AC |             |
|----------------------------|----------------|--------------|-------------|
|                            |                | -60          | -70         |
| RAS Access Time            |                | 60 ns max.   | 70 ns max.  |
| Random Cycle Time          |                | 104 ns min.  | 124 ns min. |
| Address Access Time        |                | 30 ns max.   | 35 ns max.  |
| CAS Access Time            |                | 15 ns max.   | 17 ns max.  |
| Hyper Page Mode Cycle Time |                | 25 ns min.   | 30 ns min.  |
| Power Dissipation          | Operating Mode | 3456 mW      | 3168 mW     |
|                            | Standby Mode   | 57.6 mW      | 57.6 mW     |

- Conformed to 168-pin Unbuffered DIMM JEDEC standard
- Organization : 2,097,152 words × 64 bits
- Module Size : 1.00" (height) × 5.25" (length) × 0.20" (thickness)
- Memory Device Mounted :  
MB81V17805A (2 M × 8, 2 K ref., 3.3 V)  
8 pcs
- 3.3 V ± 0.3 V Supply Voltage
- 2,048 Refresh Cycles / 32.8 ms
- Hyper Page Operation (EDO)
- Serial Presence Detect
- RAS-Only Refresh / CAS-before-RAS Refresh

# MB8502E064AC-60/-70

## ■ PACKAGE

168-pin plastic DIMM



(MDS-168P-P10)

### Package and Ordering Information

– 168-pin DIMM, order as MB8502E064AC-xxDG (DG = Gold Pad)

## MB8502E064AC-60/-70

## ■ PIN ASSIGNMENTS

| Pin No. | MB8502E064AC       | Pin No. | MB8502E064AC       | Pin No. | MB8502E064AC       | Pin No. | MB8502E064AC       |
|---------|--------------------|---------|--------------------|---------|--------------------|---------|--------------------|
| 1       | V <sub>SS</sub>    | 43      | V <sub>SS</sub>    | 85      | V <sub>SS</sub>    | 127     | V <sub>SS</sub>    |
| 2       | DQ <sub>0</sub>    | 44      | $\overline{OE}_2$  | 86      | DQ <sub>32</sub>   | 128     | N.C.               |
| 3       | DQ <sub>1</sub>    | 45      | $\overline{RAS}_2$ | 87      | DQ <sub>33</sub>   | 129     | N.C.               |
| 4       | DQ <sub>2</sub>    | 46      | $\overline{CAS}_2$ | 88      | DQ <sub>34</sub>   | 130     | $\overline{CAS}_6$ |
| 5       | DQ <sub>3</sub>    | 47      | $\overline{CAS}_3$ | 89      | DQ <sub>35</sub>   | 131     | $\overline{CAS}_7$ |
| 6       | V <sub>CC</sub>    | 48      | $\overline{WE}_2$  | 90      | V <sub>CC</sub>    | 132     | N.C.               |
| 7       | DQ <sub>4</sub>    | 49      | V <sub>CC</sub>    | 91      | DQ <sub>36</sub>   | 133     | V <sub>CC</sub>    |
| 8       | DQ <sub>5</sub>    | 50      | N.C.               | 92      | DQ <sub>37</sub>   | 134     | N.C.               |
| 9       | DQ <sub>6</sub>    | 51      | N.C.               | 93      | DQ <sub>38</sub>   | 135     | N.C.               |
| 10      | DQ <sub>7</sub>    | 52      | N.C.               | 94      | DQ <sub>39</sub>   | 136     | N.C.               |
| 11      | DQ <sub>8</sub>    | 53      | N.C.               | 95      | DQ <sub>40</sub>   | 137     | N.C.               |
| 12      | V <sub>SS</sub>    | 54      | V <sub>SS</sub>    | 96      | V <sub>SS</sub>    | 138     | V <sub>SS</sub>    |
| 13      | DQ <sub>9</sub>    | 55      | DQ <sub>16</sub>   | 97      | DQ <sub>41</sub>   | 139     | DQ <sub>48</sub>   |
| 14      | DQ <sub>10</sub>   | 56      | DQ <sub>17</sub>   | 98      | DQ <sub>42</sub>   | 140     | DQ <sub>49</sub>   |
| 15      | DQ <sub>11</sub>   | 57      | DQ <sub>18</sub>   | 99      | DQ <sub>43</sub>   | 141     | DQ <sub>50</sub>   |
| 16      | DQ <sub>12</sub>   | 58      | DQ <sub>19</sub>   | 100     | DQ <sub>44</sub>   | 142     | DQ <sub>51</sub>   |
| 17      | DQ <sub>13</sub>   | 59      | V <sub>CC</sub>    | 101     | DQ <sub>45</sub>   | 143     | V <sub>CC</sub>    |
| 18      | V <sub>CC</sub>    | 60      | DQ <sub>20</sub>   | 102     | V <sub>CC</sub>    | 144     | DQ <sub>52</sub>   |
| 19      | DQ <sub>14</sub>   | 61      | N.C.               | 103     | DQ <sub>46</sub>   | 145     | N.C.               |
| 20      | DQ <sub>15</sub>   | 62      | N.C.               | 104     | DQ <sub>47</sub>   | 146     | N.C.               |
| 21      | N.C.               | 63      | N.C.               | 105     | N.C.               | 147     | N.C.               |
| 22      | N.C.               | 64      | V <sub>SS</sub>    | 106     | N.C.               | 148     | V <sub>SS</sub>    |
| 23      | V <sub>SS</sub>    | 65      | DQ <sub>21</sub>   | 107     | V <sub>SS</sub>    | 149     | DQ <sub>53</sub>   |
| 24      | N.C.               | 66      | DQ <sub>22</sub>   | 108     | N.C.               | 150     | DQ <sub>54</sub>   |
| 25      | N.C.               | 67      | DQ <sub>23</sub>   | 109     | N.C.               | 151     | DQ <sub>55</sub>   |
| 26      | V <sub>CC</sub>    | 68      | V <sub>SS</sub>    | 110     | V <sub>CC</sub>    | 152     | V <sub>SS</sub>    |
| 27      | $\overline{WE}_0$  | 69      | DQ <sub>24</sub>   | 111     | N.C.               | 153     | DQ <sub>56</sub>   |
| 28      | $\overline{CAS}_0$ | 70      | DQ <sub>25</sub>   | 112     | $\overline{CAS}_4$ | 154     | DQ <sub>57</sub>   |
| 29      | $\overline{CAS}_1$ | 71      | DQ <sub>26</sub>   | 113     | $\overline{CAS}_5$ | 155     | DQ <sub>58</sub>   |
| 30      | $\overline{RAS}_0$ | 72      | DQ <sub>27</sub>   | 114     | N.C.               | 156     | DQ <sub>59</sub>   |
| 31      | $\overline{OE}_0$  | 73      | V <sub>CC</sub>    | 115     | N.C.               | 157     | V <sub>CC</sub>    |
| 32      | V <sub>SS</sub>    | 74      | DQ <sub>28</sub>   | 116     | V <sub>SS</sub>    | 158     | DQ <sub>60</sub>   |
| 33      | A <sub>0</sub>     | 75      | DQ <sub>29</sub>   | 117     | A <sub>1</sub>     | 159     | DQ <sub>61</sub>   |
| 34      | A <sub>2</sub>     | 76      | DQ <sub>30</sub>   | 118     | A <sub>3</sub>     | 160     | DQ <sub>62</sub>   |
| 35      | A <sub>4</sub>     | 77      | DQ <sub>31</sub>   | 119     | A <sub>5</sub>     | 161     | DQ <sub>63</sub>   |
| 36      | A <sub>6</sub>     | 78      | V <sub>SS</sub>    | 120     | A <sub>7</sub>     | 162     | V <sub>SS</sub>    |
| 37      | A <sub>8</sub>     | 79      | N.C.               | 121     | A <sub>9</sub>     | 163     | N.C.               |
| 38      | A <sub>10</sub>    | 80      | N.C.               | 122     | N.C.               | 164     | N.C.               |
| 39      | N.C.               | 81      | N.C.               | 123     | N.C.               | 165     | SA <sub>0</sub>    |
| 40      | V <sub>CC</sub>    | 82      | SDA                | 124     | V <sub>CC</sub>    | 166     | SA <sub>1</sub>    |
| 41      | V <sub>CC</sub>    | 83      | SCL                | 125     | N.C.               | 167     | SA <sub>2</sub>    |
| 42      | N.C.               | 84      | V <sub>CC</sub>    | 126     | N.C.               | 168     | V <sub>CC</sub>    |

# MB8502E064AC-60/-70

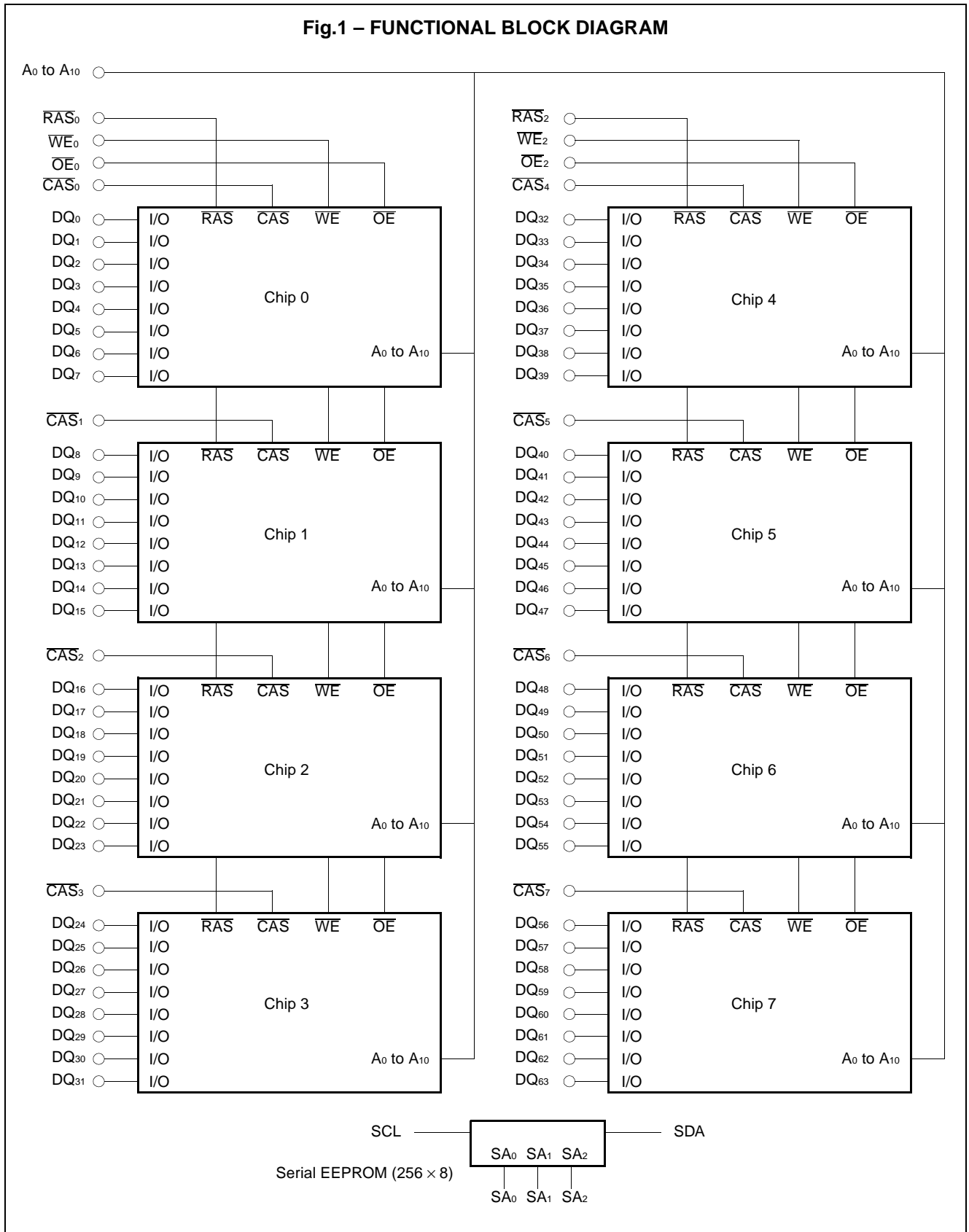
## ■ PIN DESCRIPTIONS

| Symbol                                | Function                | Input/Output | Pin Count |
|---------------------------------------|-------------------------|--------------|-----------|
| A <sub>0</sub> to A <sub>10</sub>     | Address Input           | Input        | 11        |
| RAS <sub>0</sub> and RAS <sub>2</sub> | Row Address Strobe      | Input        | 2         |
| CAS <sub>0</sub> to CAS <sub>7</sub>  | Column Address Strobe   | Input        | 8         |
| WE <sub>0</sub> and WE <sub>2</sub>   | Write Enable            | Input        | 2         |
| OE <sub>0</sub> and OE <sub>2</sub>   | Output Enable           | Input        | 2         |
| DQ <sub>0</sub> to DQ <sub>63</sub>   | Data-input/Data-output  | Input/Output | 64        |
| SCL                                   | Serial PD Clock         | Input        | 1         |
| SDA                                   | Serial PD I/O           | Input/Output | 1         |
| SA <sub>0</sub> to SA <sub>2</sub>    | Serial PD Address Input | Input        | 3         |
| V <sub>CC</sub>                       | Power Supply            | —            | 17        |
| V <sub>SS</sub>                       | Ground                  | —            | 18        |
| N.C.                                  | No Connection           | —            | 39        |

# MB8502E064AC-60/-70

## FUNCTIONAL BLOCK DIAGRAM

Fig.1 – FUNCTIONAL BLOCK DIAGRAM



# MB8502E064AC-60/-70

## ■ SERIAL PRESENCE DETECT (SPD) TABLE

| Byte       | Function Described                                |              | Bit7 | Bit6 | Bit5 | Bit4 | Bit3 | Bit2 | Bit1 | Bit0 |
|------------|---------------------------------------------------|--------------|------|------|------|------|------|------|------|------|
| 0          | Number of Bytes Used by Module Manufacturer       | 14 Bytes     | 0    | 0    | 0    | 0    | 1    | 1    | 1    | 0    |
| 1          | Total SPD Memory Size                             | 256 Bytes    | 0    | 0    | 0    | 0    | 1    | 0    | 0    | 0    |
| 2          | Memory Type                                       | EDO          | 0    | 0    | 0    | 0    | 0    | 0    | 1    | 0    |
| 3          | Number of Row Addresses                           | 11 Addresses | 0    | 0    | 0    | 0    | 1    | 0    | 1    | 1    |
| 4          | Number of Column Addresses                        | 10 Addresses | 0    | 0    | 0    | 0    | 1    | 0    | 1    | 0    |
| 5          | Number of Banks                                   | 1 Bank       | 0    | 0    | 0    | 0    | 0    | 0    | 0    | 1    |
| 6          | Module Data Width (1)                             | 64 Bits      | 0    | 1    | 0    | 0    | 0    | 0    | 0    | 0    |
| 7          | Module Data Width (2)                             | +0 Bits      | 0    | 0    | 0    | 0    | 0    | 0    | 0    | 0    |
| 8          | Module Interface Levels                           | LVTTTL       | 0    | 0    | 0    | 0    | 0    | 0    | 0    | 1    |
| 9          | RAS Access Time ( $t_{RAC}$ )                     | 60 ns        | 0    | 0    | 1    | 1    | 1    | 1    | 0    | 0    |
|            |                                                   | 70 ns        | 0    | 1    | 0    | 0    | 0    | 1    | 1    | 0    |
| 10         | CAS Access Time ( $t_{CAC}$ )                     | 15 ns        | 0    | 0    | 0    | 0    | 1    | 1    | 1    | 1    |
|            |                                                   | 17 ns        | 0    | 0    | 0    | 1    | 0    | 0    | 0    | 1    |
| 11         | Module Configuration Type (Parity or ECC or None) | None         | 0    | 0    | 0    | 0    | 0    | 0    | 0    | 0    |
| 12         | Refresh Rate / Type                               | Normal       | 0    | 0    | 0    | 0    | 0    | 0    | 0    | 0    |
| 13         | Primary DRAM Width                                | ×8           | 0    | 0    | 0    | 0    | 1    | 0    | 0    | 0    |
| 14         | Error Checking DRAM Data Width                    | None         | 0    | 0    | 0    | 0    | 0    | 0    | 0    | 0    |
| 15 to 31   | Reserved for Future Offerings                     | —            | —    | —    | —    | —    | —    | —    | —    | —    |
| 32 to 63   | Superset Information                              | —            | —    | —    | —    | —    | —    | —    | —    | —    |
| 64 to 127  | Manufacturer's Information                        | —            | —    | —    | —    | —    | —    | —    | —    | —    |
| 128 to 255 | Unused Storage Locations                          | —            | —    | —    | —    | —    | —    | —    | —    | —    |

**Note:** Any write operation must NOT be executed into the addresses of Byte 0 to Byte 127. Some or all data stored into Byte 0 to Byte 127 may be broken.

# MB8502E064AC-60/-70

## ■ ABSOLUTE MAXIMUM RATINGS (See WARNING)

| Parameter                    | Symbol    | Value        | Unit |
|------------------------------|-----------|--------------|------|
| Supply Voltage               | $V_{CC}$  | -0.5 to +4.6 | V    |
| Input Voltage                | $V_{IN}$  | -0.5 to +4.6 | V    |
| Output Voltage               | $V_{OUT}$ | -0.5 to +4.6 | V    |
| Short Circuit Output Current | $I_{OUT}$ | -50 to +50   | mA   |
| Power Dissipation            | $P_D$     | 8            | W    |
| Storage Temperature          | $T_{STG}$ | -55 to +125  | °C   |

**WARNING:** Semiconductor devices can be permanently damaged by application of stress (voltage, current, temperature, etc.) in excess of absolute maximum ratings. Do not exceed these ratings.

## ■ RECOMMENDED OPERATING CONDITIONS

(Referenced to  $V_{SS}$ )

| Parameter                      | Symbol   | Min. | Typ. | Max.             | Unit |
|--------------------------------|----------|------|------|------------------|------|
| Supply Voltage                 | $V_{CC}$ | 3.0  | 3.0  | 3.6              | V    |
| Ground                         | $V_{SS}$ | —    | 0    | —                | V    |
| Input High Voltage, All Inputs | $V_{IH}$ | 2.0  | —    | $V_{CC} + 0.3$ V | V    |
| Input Low Voltage, All Inputs* | $V_{IL}$ | -0.3 | —    | 0.8              | V    |
| Ambient Temperature            | $T_A$    | 0    | —    | 70               | °C   |

**Note:** \* Undershoots of up to -2.0 volts with a pulse width not exceeding 20 ns are acceptable.

**WARNING:** Recommended operating conditions are normal operating ranges for the semiconductor device. All the device's electrical characteristics are warranted when operated within these ranges.

Always use semiconductor devices within the recommended operating conditions. Operation outside these ranges may adversely affect reliability and could result in device failure.

No warranty is made with respect to uses, operating conditions, or combinations not represented on the data sheet. Users considering application outside the listed conditions are advised to contact their FUJITSU representative beforehand.

## ■ CAPACITANCE

( $T_A = 25^\circ\text{C}$ ,  $f = 1$  MHz,  $V_{CC} = +3.3$  V)

| Parameter         | Symbol              | Min.      | Max. | Unit |    |
|-------------------|---------------------|-----------|------|------|----|
| Input Capacitance | $A_0$ to $A_{10}$   | $C_{IN1}$ | —    | 60   | pF |
|                   | $RAS_0$ and $RAS_2$ | $C_{IN2}$ | —    | 37   | pF |
|                   | $CAS_0$ to $CAS_7$  | $C_{IN3}$ | —    | 14   | pF |
|                   | $WE_0$ and $WE_2$   | $C_{IN4}$ | —    | 37   | pF |
|                   | $OE_0$ and $OE_2$   | $C_{IN5}$ | —    | 37   | pF |
|                   | SCL                 | $C_{IN6}$ | —    | 7    | pF |
|                   | $SA_0$ to $SA_2$    | $C_{IN7}$ | —    | 7    | pF |
| I/O Capacitance   | $DQ_0$ to $DQ_{63}$ | $C_{DQ}$  | —    | 12   | pF |
|                   | SDA                 | $C_{SDA}$ | —    | 7    | pF |

# MB8502E064AC-60/-70

## ■ DC CHARACTERISTICS

(At recommended operating conditions unless otherwise noted.)

| Parameter                                               | Notes                   | Symbol          | Condition                                                                                                                                                                | Value |      | Unit          |
|---------------------------------------------------------|-------------------------|-----------------|--------------------------------------------------------------------------------------------------------------------------------------------------------------------------|-------|------|---------------|
|                                                         |                         |                 |                                                                                                                                                                          | Min.  | Max. |               |
| Output High Voltage                                     | *1                      | $V_{OH}$        | $I_{OH} = -2 \text{ mA}$                                                                                                                                                 | 2.4   | —    | V             |
| Output Low Voltage                                      | *1                      | $V_{OL}$        | $I_{OL} = 2 \text{ mA}$                                                                                                                                                  | —     | 0.4  | V             |
| Input Leakage Current                                   | $\overline{\text{CAS}}$ | $I_{I(L)}$      | $0 \text{ V} \leq V_{IN} \leq V_{CC}$ ,<br>$3.0 \text{ V} \leq V_{CC} \leq 3.6 \text{ V}$ ,<br>$V_{SS} = 0 \text{ V}$ , all other pins<br>not under test = $0 \text{ V}$ | -10   | 10   | $\mu\text{A}$ |
|                                                         | Others                  |                 |                                                                                                                                                                          | -50   | 50   |               |
| Output Leakage Current                                  |                         | $I_{O(L)}$      | $0 \text{ V} \leq V_{OUT} \leq V_{CC}$ ,<br>$3.0 \text{ V} \leq V_{CC} \leq 3.6 \text{ V}$<br>Data out disabled                                                          | -10   | 10   | $\mu\text{A}$ |
| Operating Current<br>(Average Power<br>Supply Current)  | *2                      | MB8502E064AC-60 | $\overline{\text{RAS}}$ & $\overline{\text{CAS}}$ cycling,<br>$t_{RC} = \text{min}$                                                                                      | —     | 960  | mA            |
|                                                         |                         | MB8502E064AC-70 |                                                                                                                                                                          | —     | 880  |               |
| Standby Current<br>(Power Supply<br>Current)            | *2                      | TTL Level       | $\overline{\text{RAS}} = \overline{\text{CAS}} = V_{IH}$                                                                                                                 | —     | 16   | mA            |
|                                                         |                         | CMOS Level      | $\overline{\text{RAS}} = \overline{\text{CAS}} \geq V_{CC} - 0.2 \text{ V}$                                                                                              | —     | 8    |               |
| Refresh Current #1<br>(Average Power<br>Supply Current) | *2                      | MB8502E064AC-60 | $\overline{\text{CAS}} = V_{IH}$ ,<br>$\overline{\text{RAS}} = \text{cycling}$ ,<br>$t_{RC} = \text{min}$                                                                | —     | 960  | mA            |
|                                                         |                         | MB8502E064AC-70 |                                                                                                                                                                          | —     | 880  |               |
| Hyper Page Mode<br>Current                              | *2                      | MB8502E064AC-60 | $\overline{\text{RAS}} = V_{IL}$ ,<br>$\overline{\text{CAS}} = \text{cycling}$ ,<br>$t_{HPC} = \text{min}$                                                               | —     | 960  | mA            |
|                                                         |                         | MB8502E064AC-70 |                                                                                                                                                                          | —     | 880  |               |
| Refresh Current #2<br>(Average Power<br>Supply Current) | *2                      | MB8502E064AC-60 | $\overline{\text{RAS}}$ cycling,<br>$\overline{\text{CAS}}$ -before- $\overline{\text{RAS}}$ ,<br>$t_{RC} = \text{min}$                                                  | —     | 960  | mA            |
|                                                         |                         | MB8502E064AC-70 |                                                                                                                                                                          | —     | 880  |               |

**Notes:** \*1. Referenced to  $V_{SS}$ .

\*2.  $I_{CC}$  depends on the output load conditions and cycle rate. The specific values are obtained with the output open.

$I_{CC}$  depends on the number of address change as  $\overline{\text{RAS}} = V_{IL}$  and  $\overline{\text{CAS}} = V_{IH}$  and  $V_{IL} > -0.3 \text{ V}$ .

$I_{CC1}$ ,  $I_{CC3}$ ,  $I_{CC4}$  and  $I_{CC5}$  are specified at one time of address change during  $\overline{\text{RAS}} = V_{IL}$  and  $\overline{\text{CAS}} = V_{IH}$ .

$I_{CC2}$  is specified during  $\overline{\text{RAS}} = V_{IH}$  and  $V_{IL} > -0.3 \text{ V}$ .



## MB8502E064AC-60/-70

## ■ AC CHARACTERISTICS

(At recommended operating conditions unless otherwise noted.) Notes 1, 2, 3

| No. | Parameter                                               | Notes | Symbol    | MB8502E064AC-60 |        | MB8502E064AC-70 |        | Unit |
|-----|---------------------------------------------------------|-------|-----------|-----------------|--------|-----------------|--------|------|
|     |                                                         |       |           | Min.            | Max.   | Min.            | Max.   |      |
| 1   | Time Between Refresh                                    |       | $t_{REF}$ | —               | 32.8   | —               | 32.8   | ms   |
| 2   | Random Read/Write Cycle Time                            |       | $t_{RC}$  | 104             | —      | 124             | —      | ns   |
| 3   | Read-Modify-Write Cycle Time                            |       | $t_{RWC}$ | 138             | —      | 162             | —      | ns   |
| 4   | Access Time from $\overline{RAS}$                       | *4,7  | $t_{RAC}$ | —               | 60     | —               | 70     | ns   |
| 5   | Access Time from $\overline{CAS}$                       | *5,7  | $t_{CAC}$ | —               | 15     | —               | 17     | ns   |
| 6   | Column Address Access Time                              | *6,7  | $t_{AA}$  | —               | 30     | —               | 35     | ns   |
| 7   | Output Hold Time                                        |       | $t_{OH}$  | 3               | —      | 3               | —      | ns   |
| 8   | Output Hold Time from $\overline{CAS}$                  |       | $t_{OHC}$ | 5               | —      | 5               | —      | ns   |
| 9   | Output Buffer Turn On Delay Time                        |       | $t_{ON}$  | 0               | —      | 0               | —      | ns   |
| 10  | Output Buffer Turn Off Delay Time                       | *8    | $t_{OFF}$ | —               | 15     | —               | 17     | ns   |
| 11  | Output Buffer Turn Off Delay Time from $\overline{RAS}$ | *8    | $t_{OFR}$ | —               | 15     | —               | 17     | ns   |
| 12  | Output Buffer Turn Off Delay Time from $\overline{WE}$  | *8    | $t_{WEZ}$ | —               | 15     | —               | 17     | ns   |
| 13  | Transition Time                                         |       | $t_T$     | 1               | 50     | 1               | 50     | ns   |
| 14  | $\overline{RAS}$ Precharge Time                         |       | $t_{RP}$  | 40              | —      | 50              | —      | ns   |
| 15  | $\overline{RAS}$ Pulse Width                            |       | $t_{RAS}$ | 60              | 100000 | 70              | 100000 | ns   |
| 16  | $\overline{RAS}$ Hold Time                              |       | $t_{RSH}$ | 15              | —      | 17              | —      | ns   |
| 17  | $\overline{CAS}$ to $\overline{RAS}$ Precharge Time     |       | $t_{CRP}$ | 5               | —      | 5               | —      | ns   |
| 18  | $\overline{RAS}$ to $\overline{CAS}$ Delay Time         | *9,10 | $t_{RCD}$ | 14              | 45     | 14              | 53     | ns   |
| 19  | $\overline{CAS}$ Pulse Width                            |       | $t_{CAS}$ | 10              | —      | 13              | —      | ns   |
| 20  | $\overline{CAS}$ Hold Time                              |       | $t_{CSH}$ | 40              | —      | 50              | —      | ns   |
| 21  | $\overline{CAS}$ Precharge Time (Normal)                | *17   | $t_{CPN}$ | 10              | —      | 10              | —      | ns   |
| 22  | Row Address Setup Time                                  |       | $t_{ASR}$ | 0               | —      | 0               | —      | ns   |
| 23  | Row Address Hold Time                                   |       | $t_{RAH}$ | 10              | —      | 10              | —      | ns   |
| 24  | Column Address Setup Time                               |       | $t_{ASC}$ | 0               | —      | 0               | —      | ns   |
| 25  | Column Address Hold Time                                |       | $t_{CAH}$ | 10              | —      | 10              | —      | ns   |
| 26  | Column Address Hold Time from $\overline{RAS}$          |       | $t_{AR}$  | 24              | —      | 24              | —      | ns   |
| 27  | $\overline{RAS}$ to Column Address Delay Time           | *11   | $t_{RAD}$ | 12              | 30     | 12              | 35     | ns   |
| 28  | Column Address to $\overline{RAS}$ Lead Time            |       | $t_{RAL}$ | 30              | —      | 35              | —      | ns   |
| 29  | Column Address to $\overline{CAS}$ Lead Time            |       | $t_{CAL}$ | 23              | —      | 28              | —      | ns   |
| 30  | Read Command Setup Time                                 |       | $t_{RCS}$ | 5               | —      | 5               | —      | ns   |
| 31  | Read Command Hold Time Referenced to $\overline{RAS}$   | *12   | $t_{RRH}$ | 0               | —      | 0               | —      | ns   |

(Continued)

## MB8502E064AC-60/-70

| No. | Parameter                                                                                      | Notes  | Symbol            | MB8502E064AC-60 |        | MB8502E064AC-70 |        | Unit |
|-----|------------------------------------------------------------------------------------------------|--------|-------------------|-----------------|--------|-----------------|--------|------|
|     |                                                                                                |        |                   | Min.            | Max.   | Min.            | Max.   |      |
| 32  | Read Command Hold Time Referenced to $\overline{\text{CAS}}$                                   | *12    | t <sub>RCH</sub>  | 0               | —      | 0               | —      | ns   |
| 33  | Write Command Setup Time                                                                       | *13,18 | t <sub>WCS</sub>  | 0               | —      | 0               | —      | ns   |
| 34  | Write Command Hold Time                                                                        |        | t <sub>WCH</sub>  | 10              | —      | 10              | —      | ns   |
| 35  | Write Command Hold Time from $\overline{\text{RAS}}$                                           |        | t <sub>WCR</sub>  | 24              | —      | 24              | —      | ns   |
| 36  | $\overline{\text{WE}}$ Pulse Width                                                             |        | t <sub>WP</sub>   | 10              | —      | 10              | —      | ns   |
| 37  | Write Command to $\overline{\text{RAS}}$ Lead Time                                             |        | t <sub>RWL</sub>  | 15              | —      | 17              | —      | ns   |
| 38  | Write Command to $\overline{\text{CAS}}$ Lead Time                                             |        | t <sub>CWL</sub>  | 10              | —      | 13              | —      | ns   |
| 39  | DIN Setup Time                                                                                 |        | t <sub>DS</sub>   | 0               | —      | 0               | —      | ns   |
| 40  | DIN Hold Time                                                                                  |        | t <sub>DH</sub>   | 10              | —      | 10              | —      | ns   |
| 41  | Data Hold Time from $\overline{\text{RAS}}$                                                    |        | t <sub>DHR</sub>  | 24              | —      | 24              | —      | ns   |
| 42  | $\overline{\text{RAS}}$ to $\overline{\text{WE}}$ Delay Time                                   | *18    | t <sub>RWD</sub>  | 77              | —      | 89              | —      | ns   |
| 43  | $\overline{\text{CAS}}$ to $\overline{\text{WE}}$ Delay Time                                   | *18    | t <sub>CWD</sub>  | 32              | —      | 36              | —      | ns   |
| 44  | Column Address to $\overline{\text{WE}}$ Delay Time                                            | *18    | t <sub>AWD</sub>  | 47              | —      | 54              | —      | ns   |
| 45  | $\overline{\text{RAS}}$ Precharge Time to $\overline{\text{CAS}}$ Active Time (Refresh Cycles) |        | t <sub>RPC</sub>  | 5               | —      | 5               | —      | ns   |
| 46  | $\overline{\text{CAS}}$ Setup Time (C-B-R Refresh)                                             |        | t <sub>CSR</sub>  | 0               | —      | 0               | —      | ns   |
| 47  | $\overline{\text{CAS}}$ Hold Time (C-B-R Refresh)                                              |        | t <sub>CHR</sub>  | 10              | —      | 12              | —      | ns   |
| 48  | Access Time from $\overline{\text{OE}}$                                                        | *7     | t <sub>OEA</sub>  | —               | 15     | —               | 17     | ns   |
| 49  | Output Buffer Turn Off Delay from $\overline{\text{OE}}$ *8                                    |        | t <sub>OEZ</sub>  | —               | 15     | —               | 17     | ns   |
| 50  | $\overline{\text{OE}}$ to $\overline{\text{RAS}}$ Lead Time for Valid Data                     |        | t <sub>OEL</sub>  | 10              | —      | 10              | —      | ns   |
| 51  | $\overline{\text{OE}}$ to $\overline{\text{CAS}}$ Lead Time                                    |        | t <sub>COL</sub>  | 5               | —      | 5               | —      | ns   |
| 52  | $\overline{\text{OE}}$ Hold Time Referenced to $\overline{\text{WE}}$                          | *14    | t <sub>OEH</sub>  | 5               | —      | 5               | —      | ns   |
| 53  | $\overline{\text{OE}}$ to Data in Delay Time                                                   |        | t <sub>OED</sub>  | 15              | —      | 17              | —      | ns   |
| 54  | $\overline{\text{RAS}}$ to Data in Delay Time                                                  |        | t <sub>RDD</sub>  | 15              | —      | 17              | —      | ns   |
| 55  | $\overline{\text{CAS}}$ to Data in Delay Time                                                  |        | t <sub>CDD</sub>  | 15              | —      | 17              | —      | ns   |
| 56  | DIN to $\overline{\text{CAS}}$ Delay Time                                                      | *15    | t <sub>DZC</sub>  | 0               | —      | 0               | —      | ns   |
| 57  | DIN to $\overline{\text{OE}}$ Delay Time                                                       | *15    | t <sub>DZO</sub>  | 0               | —      | 0               | —      | ns   |
| 58  | $\overline{\text{OE}}$ Precharge Time                                                          |        | t <sub>OEP</sub>  | 8               | —      | 8               | —      | ns   |
| 59  | $\overline{\text{OE}}$ Hold Time Referenced to $\overline{\text{CAS}}$                         |        | t <sub>OECH</sub> | 10              | —      | 10              | —      | ns   |
| 60  | $\overline{\text{WE}}$ Precharge Time                                                          |        | t <sub>WPZ</sub>  | 8               | —      | 8               | —      | ns   |
| 61  | $\overline{\text{WE}}$ to Data in Delay Time                                                   |        | t <sub>WED</sub>  | 15              | —      | 17              | —      | ns   |
| 62  | Hyper Page Mode $\overline{\text{RAS}}$ Pulse Width                                            |        | t <sub>RASP</sub> | —               | 100000 | —               | 100000 | ns   |

(Continued)

**MB8502E064AC-60/-70**

(Continued)

| No. | Parameter                                                                  | Notes | Symbol      | MB8502E064AC-60 |      | MB8502E064AC-70 |      | Unit |
|-----|----------------------------------------------------------------------------|-------|-------------|-----------------|------|-----------------|------|------|
|     |                                                                            |       |             | Min.            | Max. | Min.            | Max. |      |
| 63  | Hyper Page Mode Read/Write Cycle Time                                      |       | $t_{HPC}$   | 25              | —    | 30              | —    | ns   |
| 64  | Hyper Page Mode Read-Modify-Write Cycle Time                               |       | $t_{HPRWC}$ | 69              | —    | 79              | —    | ns   |
| 65  | Access Time from $\overline{CAS}$ Precharge                                | *7,16 | $t_{CPA}$   | —               | 35   | —               | 40   | ns   |
| 66  | Hyper Page Mode $\overline{CAS}$ Precharge Time                            |       | $t_{CP}$    | 10              | —    | 10              | —    | ns   |
| 67  | Hyper Page Mode $\overline{RAS}$ Hold Time from $\overline{CAS}$ Precharge |       | $t_{RHCP}$  | 35              | —    | 40              | —    | ns   |
| 68  | Hyper Page Mode $\overline{CAS}$ Precharge to $\overline{WE}$ Delay Time   | *18   | $t_{CPWD}$  | 52              | —    | 59              | —    | ns   |

# MB8502E064AC-60/-70

- Notes:**
- \*1. An initial pause ( $\overline{RAS} = \overline{CAS} = V_{IH}$ ) of 200  $\mu s$  is required after power-up followed by any eight RAS-only cycles or eight  $\overline{CAS}$ -before-RAS refresh cycles ( $WE = V_{IH}$ ) before proper device operation is achieved. If an internal refresh counter is used, a minimum of eight  $\overline{CAS}$ -before-RAS initialization cycles are required instead of eight RAS cycles.
  - \*2. AC characteristics assume  $t_T = 2$  ns.
  - \*3.  $V_{IH}$  (min) and  $V_{IL}$  (max) are reference levels for measuring the timing of input signals. Transition times are measured between  $V_{IH}$  (min) and  $V_{IL}$  (max).
  - \*4. Assumes that  $t_{RCD} \leq t_{RCD}(\max)$ ,  $t_{RAD} \leq t_{RAD}(\max)$ . If  $t_{RCD}$  and/or  $t_{RAD}$  is greater than the maximum recommended value shown in this table,  $t_{RAC}$  will be increased by the amount that  $t_{RCD}$  and/or  $t_{RAD}$  exceeds the value shown.
  - \*5. If  $t_{RCD} \geq t_{RCD}(\max)$ ,  $t_{RAD} \geq t_{RAD}(\max)$ , and  $t_{ASC} \geq t_{AA} - t_{CAC} - t_T$ , access time is  $t_{CAC}$ .
  - \*6. If  $t_{RAD} \geq t_{RAD}(\max)$  and  $t_{ASC} \leq t_{AA} - t_{CAC} - t_T$ , access time is  $t_{AA}$ .
  - \*7. Measured with a load equivalent to one TTL loads and 100 pF.
  - \*8.  $t_{OFF}$ ,  $t_{OEZ}$ ,  $t_{OFR}$  and  $t_{WEZ}$  are specified that output buffer change to high-impedance state.
  - \*9. Operation within the  $t_{RCD}(\max)$  limit ensures that  $t_{RAC}(\max)$  can be met.  $t_{RCD}(\max)$  is specified as a reference point only; if  $t_{RCD}$  is greater than the specified  $t_{RCD}(\max)$  limit, access time is controlled exclusively by  $t_{CAC}$  or  $t_{AA}$ .
  - \*10.  $t_{RCD}(\min) = t_{RAH}(\min) + 2t_T + t_{ASC}(\min)$ .
  - \*11. Operation within the  $t_{RAD}(\max)$  limit ensures that  $t_{RAC}(\max)$  can be met.  $t_{RAD}(\max)$  is specified as a reference point only; if  $t_{RAD}$  is greater than the specified  $t_{RAD}(\max)$  limit, access time is controlled exclusively by  $t_{CAC}$  or  $t_{AA}$ .
  - \*12. Either  $t_{RRH}$  or  $t_{RCH}$  must be satisfied for a read cycle.
  - \*13.  $t_{WCS}$  is specified as a reference point only. If  $t_{WCS} \geq t_{WCS}(\min)$  the data output pin will remain High-Z state through entire cycle.
  - \*14. Assumes that  $t_{WCS} < t_{WCS}(\min)$ .
  - \*15. Either  $t_{DZC}$  or  $t_{DZO}$  must be satisfied.
  - \*16.  $t_{CPA}$  is access time from the selection of a new column address (caused by changing  $\overline{CAS}$  from "L" to "H"). Therefore, if  $t_{CP}$  becomes long,  $t_{CPA}$  also becomes longer than  $t_{CPA}(\max)$ .
  - \*17. Assumes  $\overline{CAS}$ -before- $\overline{RAS}$  refresh cycle.
  - \*18.  $t_{WCS}$ ,  $t_{CWD}$ ,  $t_{RWD}$ ,  $t_{AWD}$ , and  $t_{CPWD}$  are not restrictive operating parameters. They are included in the data sheet as an electrical characteristic only. If  $t_{WCS} \geq t_{WCS}(\min)$ , the cycle is an early write cycle and  $D_{OUT}$  pin will maintain high-impedance state throughout the entire cycle. If  $t_{CWD} \geq t_{CWD}(\min)$ ,  $t_{RWD} \geq t_{RWD}(\min)$ ,  $t_{AWD} \geq t_{AWD}(\min)$ , and  $t_{CPWD} \geq t_{CPWD}(\min)$ , the cycle is a read-modify-write cycle and data from the selected cell will appear at the  $D_{OUT}$  pin. If neither of the above conditions is satisfied, the cycle is a delayed write cycle and invalid data will appear the  $D_{OUT}$  pin, and write operation can be executed by satisfying  $t_{RWL}$ ,  $t_{CWL}$ ,  $t_{RAL}$  and  $t_{CAL}$  specifications.

\*Source: See MB81V17805A Data Sheet for details on the electricals.

## ■ SERIAL PRESENCE DETECT (SPD) FUNCTION

### 1. PIN DESCRIPTIONS

#### SCL (Serial Clock)

SCL input is used to clock all data input/output of SPD.

#### SDA (Serial Data)

SDA is a common pin used for all data input/output of SPD. The SDA pull-up resistor is required due to the open-drain output.

#### SA<sub>0</sub>, SA<sub>1</sub>, SA<sub>2</sub> (Address)

Address inputs are used to set the least significant three bits of the eight bits slave address. The address inputs must be fixed to select a particular module and the fixed address of each module must be different each other.

### 2. SPD OPERATIONS

#### CLOCK and DATA CONVENTION

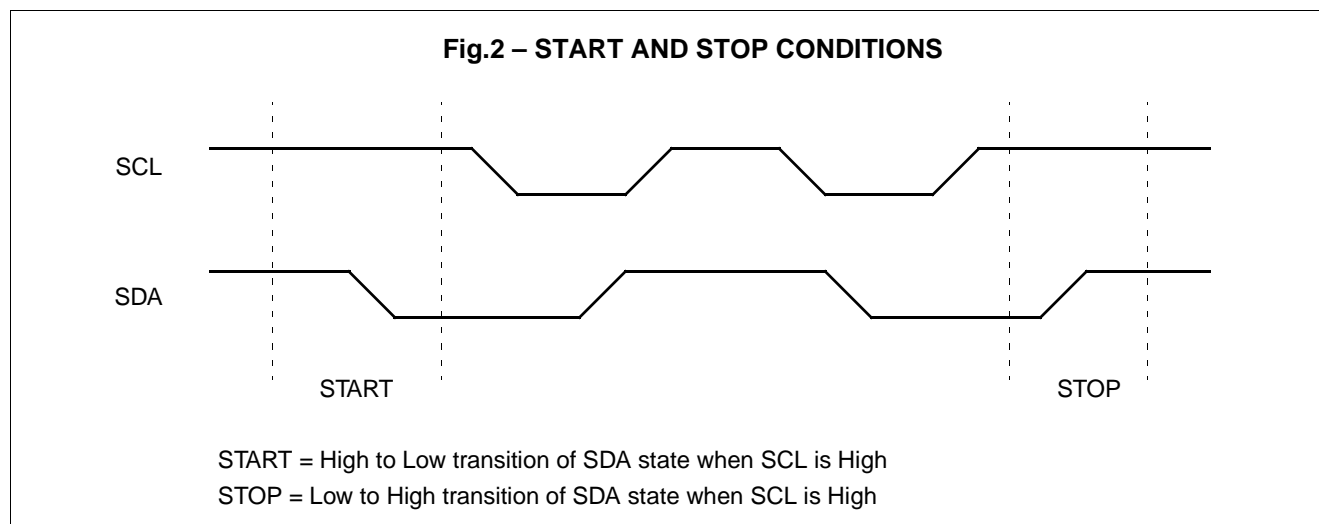
Data states on the SDA can change only during SCL=Low. SDA state changes during SCL=High are indicated start and stop conditions. Refer to Fig.2 below.

#### START CONDITION

All commands are preceded by a start condition, which is a transition of SDA state from High to Low when SCL=High. SPD will not respond to any command until this condition has been met.

#### STOP CONDITION

All read or write operation must be terminated by a stop condition, which is a transition of SDA state from Low to High when SCL=High. The stop condition is also used to make the SPD into the state of standby power mode after a read sequence.



# MB8502E064AC-60/-70

## ACKNOWLEDGE

Acknowledge is a software convention used to indicate successful data transfer. The transmitting device, either master or slave, will release the bus after transmitting eight bits. During the ninth clock cycle the receiver will put the SDA line to Low in order to acknowledge that it received the eight bits of data.

The SPD will respond with an acknowledge when it received the start condition followed by slave address issued by master.

In the read operation, the SPD will transmit eight bits of data, release the SDA line and monitor the line for an acknowledge. If an acknowledge is detected and no stop condition is issued by master, the SPD will continue to transmit data. If an acknowledge is not detected, the SPD will terminated further data transmissions. The master must then issue a stop condition to return the SPD to the standby power mode.

In the write operation, upon receipt of eight bits of data the SPD will respond with an acknowledge, and await the next eight bits of data, again responding with an acknowledge until the stop condition is issued by master.

## SLAVE ADDRESS ADDRESSING

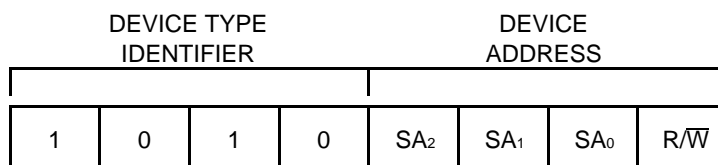
Following a start condition, the master must output the eight bits slave address. The most significant four bits of the slave address are device type identifier. For the SPD this is fixed as 1010[B]. Refer to the Fig.3 below.

The next three significant bits are used to select a particular device. A system could have up to eight SPD devices –namely up to eight modules– on the bus. The eight addresses for eight SPD devices are defined by the state of the SA<sub>0</sub>, SA<sub>1</sub> and SA<sub>2</sub> inputs.

The last bit of the slave address defines the operation to be performed. When R/W bit is “1”, a read operation is selected, when R/W bit is “0”, a write operation is selected.

Following the start condition, the SPD monitors the SDA line comparing the slave address being transmitted with its slave address (device type and state of SA<sub>0</sub>, SA<sub>1</sub>, and SA<sub>2</sub> inputs). Upon a correct compare the SPD outputs an acknowledge on the SDA line. Depending on the state of the R/W bit, the SPD will execute a read or write operation.

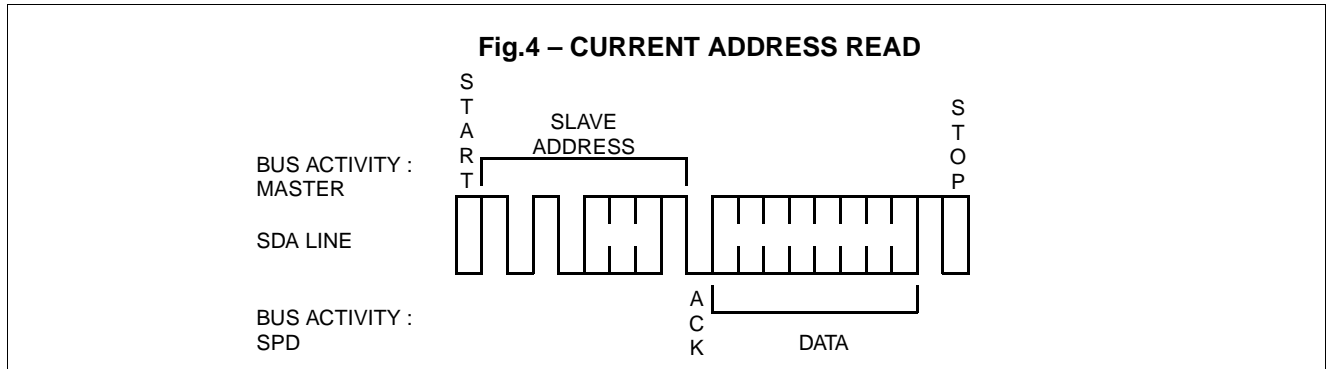
**Fig.3 – SLAVE ADDRESS**



### 3. READ OPERATIONS

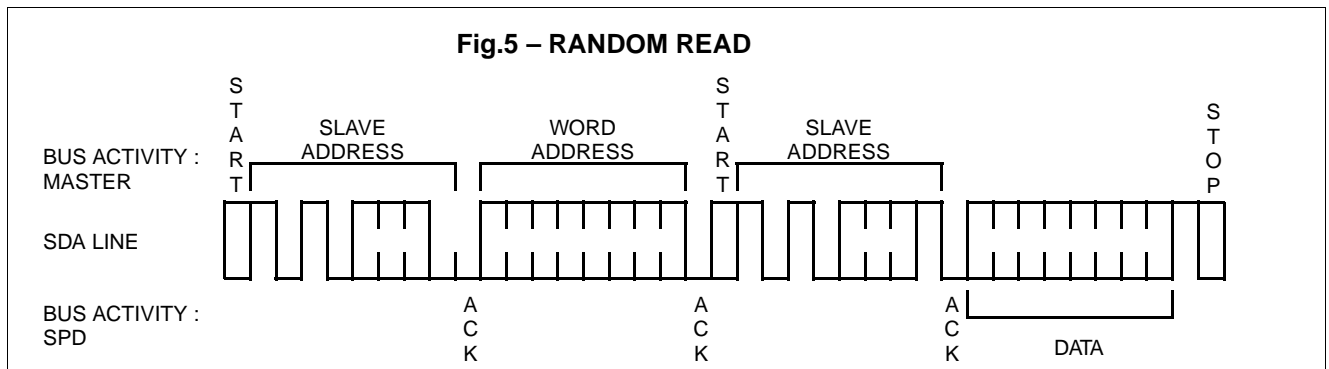
#### CURRENT ADDRESS READ

Internally the SPD contains an address counter that maintains the address of the last data accessed, incremented by one. Therefore, if the last access (either a read or write operation) was to address(n), the next read operation would access data from address(n+1). Upon receipt of the slave address with the  $R/\overline{W}$  bit = "1", the SPD issues an acknowledge and transmits the eight bits of data during the next eight clock cycles. The master terminates this transmission by issuing a stop condition, omitting the ninth clock cycle acknowledge. Refer to Fig.4 for the sequence of address, acknowledge and data transfer.



#### RANDOM READ

Random Read operations allow the master to access any memory location in a random manner. Prior to issuing the slave address with the  $R/\overline{W}$  bit = "1", the master must first perform a "dummy" write operation on the SPD. The master issues the start condition, and the slave address followed by the word address. After the word address acknowledge, the master immediately reissues the start condition and the slave address with the  $R/\overline{W}$  bit = "1". This will be followed by an acknowledge from the SPD and then by the eight bits of data. The master terminates this transmission by issuing a stop condition, omitting the ninth clock cycle acknowledge. Refer to Fig.5 for the sequence of address, acknowledge and data transfer.

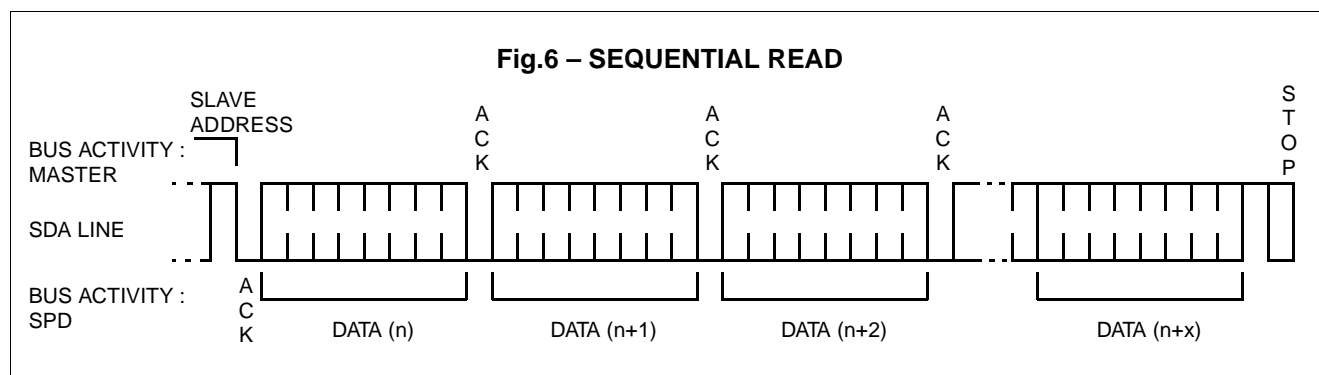


# MB8502E064AC-60/-70

## SEQUENTIAL READ

Sequential Read can be initiated as either a current address read or random read. The first data are transmitted as with the other read mode, however, the master now responds with an acknowledge, indicating it requires additional data. The SPD continues to output data for each acknowledge received. The master terminates this transmission by issuing a stop condition, omitting the ninth clock cycle acknowledge. Refer to Fig.6 for the sequence of address, acknowledge and data transfer.

The data output is sequential, with the data from address(n) followed by the data from address(n+1). The address counter for read operations increments all address bits, allowing the entire memory contents to be serially read during one operation. At the end of the address space (address 255), the counter “rolls over” to address 0 and the SPD continues to output data for each acknowledge received.



## 4. DC CHARACTERISTICS

| Parameter              | Note | Test Condition                        | Symbol    | Min. | Max. | Unit          |
|------------------------|------|---------------------------------------|-----------|------|------|---------------|
| Input Leakage Current  |      | $0\text{ V} \leq V_{IN} \leq V_{CC}$  | $S_{ILI}$ | -10  | 10   | $\mu\text{A}$ |
| Output Leakage Current |      | $0\text{ V} \leq V_{OUT} \leq V_{CC}$ | $S_{ILO}$ | -10  | 10   | $\mu\text{A}$ |
| Output Low Voltage     | *1   | $I_{OL} = 3.0\text{ mA}$              | $S_{VOL}$ | —    | 0.4  | V             |

**Note:** \*1 Referenced to  $V_{SS}$ .

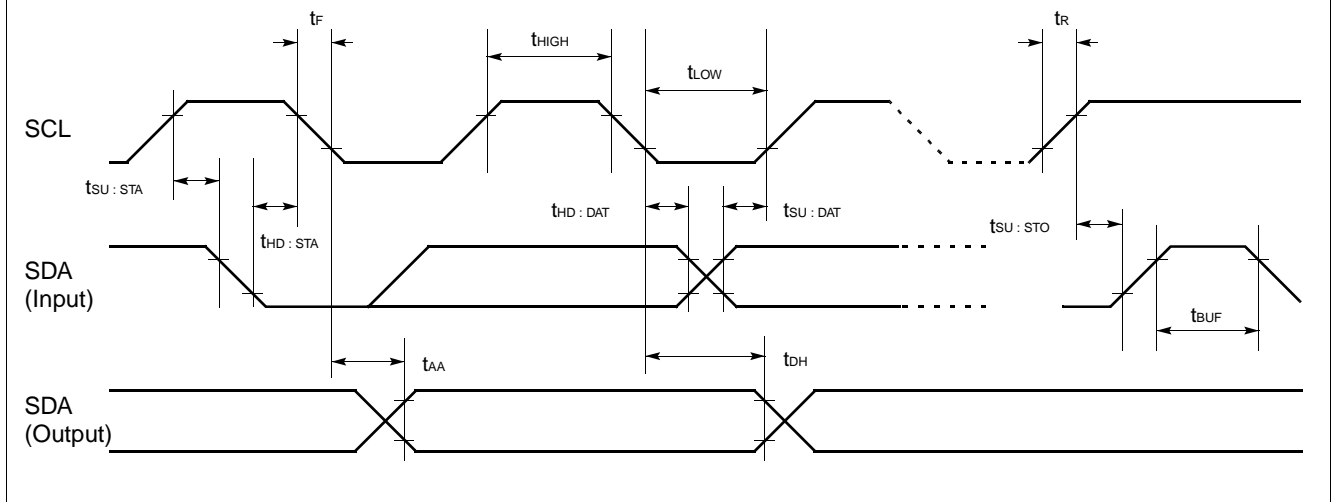


# MB8502E064AC-60/-70

## 5. AC CHARACTERISTICS

| No. | Parameter                                                        | Symbol       | Min. | Max. | Unit    |
|-----|------------------------------------------------------------------|--------------|------|------|---------|
| 1   | SCL Clock Frequency                                              | $f_{SCL}$    | 0    | 100  | kHz     |
| 2   | Noise Suppression Time<br>Constant at SCL, SDA Inputs            | $T_I$        | —    | 100  | ns      |
| 3   | SCL Low to SDA Data Out Valid                                    | $t_{AA}$     | 0.3  | 3.5  | $\mu$ s |
| 4   | Time the Bus Must Be Free before<br>a New Transmission Can Start | $t_{BUF}$    | 4.7  | —    | $\mu$ s |
| 5   | Start Condition Hold Time                                        | $t_{HD:STA}$ | 4.0  | —    | $\mu$ s |
| 6   | Clock Low Period                                                 | $t_{LOW}$    | 4.7  | —    | $\mu$ s |
| 7   | Clock High Period                                                | $t_{HIGH}$   | 4.0  | —    | $\mu$ s |
| 8   | Start Condition Setup Time                                       | $t_{SU:STA}$ | 4.7  | —    | $\mu$ s |
| 9   | Data In Hold Time                                                | $t_{HD:DAT}$ | 0    | —    | $\mu$ s |
| 10  | Data In Setup Time                                               | $t_{SU:DAT}$ | 250  | —    | ns      |
| 11  | SDA and SCL Rise Time                                            | $t_R$        | —    | 1    | $\mu$ s |
| 12  | SDA and SCL Fall Time                                            | $t_F$        | —    | 300  | ns      |
| 13  | Stop Condition Setup Time                                        | $t_{SU:STO}$ | 4.7  | —    | $\mu$ s |
| 14  | Data Out Hold Time                                               | $t_{DH}$     | 100  | —    | ns      |
| 15  | Write Cycle Time                                                 | $t_{WR}$     | —    | 15   | ms      |

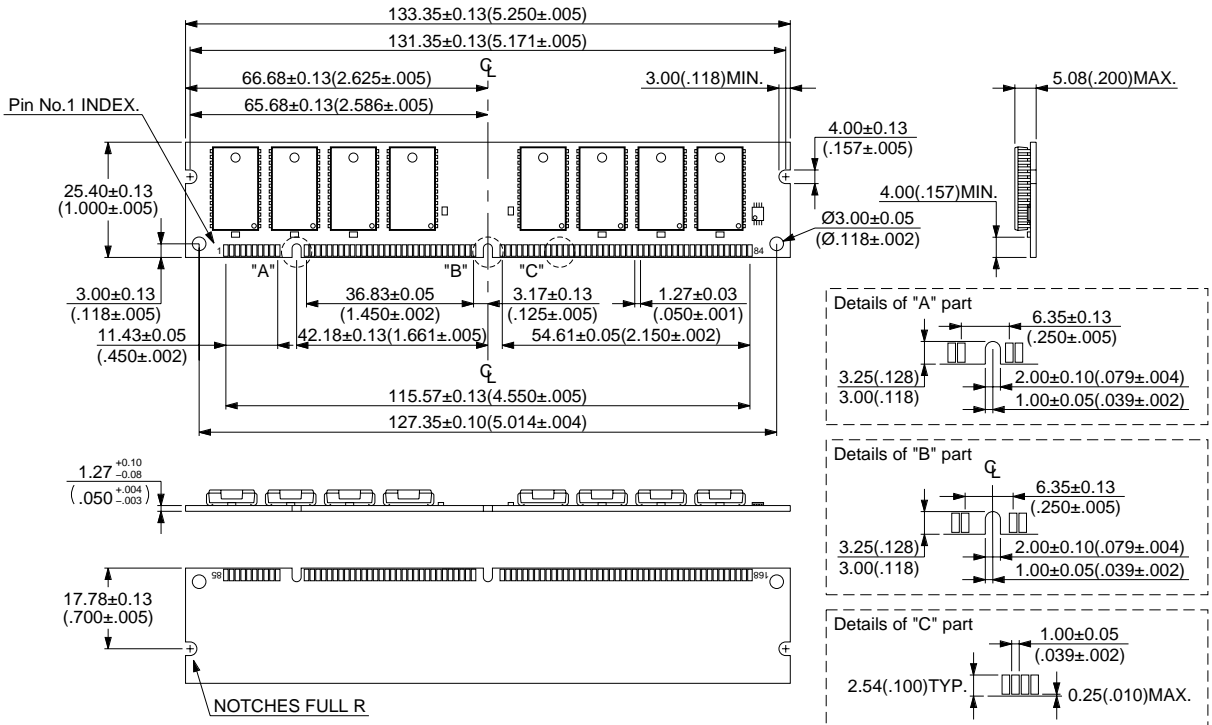
Fig.7 – TIMING WAVEFORM



# MB8502E064AC-60/-70

## ■ PACKAGE DIMENSIONS

168-pin plastic DIMM  
(MDS-168P-P10)



© 1997 FUJITSU LIMITED M168010SC-1-1

Dimensions in mm (inches)

# FUJITSU LIMITED

*For further information please contact:*

## **Japan**

FUJITSU LIMITED  
Corporate Global Business Support Division  
Electronic Devices  
KAWASAKI PLANT, 4-1-1, Kamikodanaka  
Nakahara-ku, Kawasaki-shi  
Kanagawa 211-8588, Japan  
Tel: (044) 754-3763  
Fax: (044) 754-3329

<http://www.fujitsu.co.jp/>

## **North and South America**

FUJITSU MICROELECTRONICS, INC.  
Semiconductor Division  
3545 North First Street  
San Jose, CA 95134-1804, USA  
Tel: (408) 922-9000  
Fax: (408) 922-9179

Customer Response Center  
*Mon. - Fri.: 7 am - 5 pm (PST)*  
Tel: (800) 866-8608  
Fax: (408) 922-9179

<http://www.fujitsumicro.com/>

## **Europe**

FUJITSU MIKROELEKTRONIK GmbH  
Am Siebenstein 6-10  
D-63303 Dreieich-Buchsschlag  
Germany  
Tel: (06103) 690-0  
Fax: (06103) 690-122

<http://www.fujitsu-edc.com/>

## **Asia Pacific**

FUJITSU MICROELECTRONICS ASIA PTE LTD  
#05-08, 151 Lorong Chuan  
New Tech Park  
Singapore 556741  
Tel: (65) 281-0770  
Fax: (65) 281-0220

<http://www.fmap.com.sg/>

F9803

© FUJITSU LIMITED Printed in Japan

All Rights Reserved.

The contents of this document are subject to change without notice. Customers are advised to consult with FUJITSU sales representatives before ordering.

The information and circuit diagrams in this document presented as examples of semiconductor device applications, and are not intended to be incorporated in devices for actual use. Also, FUJITSU is unable to assume responsibility for infringement of any patent rights or other rights of third parties arising from the use of this information or circuit diagrams.

FUJITSU semiconductor devices are intended for use in standard applications (computers, office automation and other office equipment, industrial, communications, and measurement equipment, personal or household devices, etc.).

### **CAUTION:**

Customers considering the use of our products in special applications where failure or abnormal operation may directly affect human lives or cause physical injury or property damage, or where extremely high levels of reliability are demanded (such as aerospace systems, atomic energy controls, sea floor repeaters, vehicle operating controls, medical devices for life support, etc.) are requested to consult with FUJITSU sales representatives before such use. The company will not be responsible for damages arising from such use without prior approval.

Any semiconductor devices have inherently a certain rate of failure. You must protect against injury, damage or loss from such failures by incorporating safety design measures into your facility and equipment such as redundancy, fire protection, and prevention of over-current levels and other abnormal operating conditions.

If any products described in this document represent goods or technologies subject to certain restrictions on export under the Foreign Exchange and Foreign Trade Control Law of Japan, the prior authorization by Japanese government should be required for export of those products from Japan.